

# LAKE NORMAN CDR+J STANDARD

CORNELIUS, NC  
DEALER CODE: 60068  
PROJECT TYPE: NEW BUILD  
PLANNING POTENTIAL: 1,882



**LAKE NORMAN CDR+J STANDARD**

CORNELIUS, NC

3.80 PROPOSED - EXTERIOR AXONOMETRIC

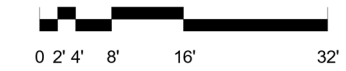


# LAKE NORMAN CDR+J STANDARD

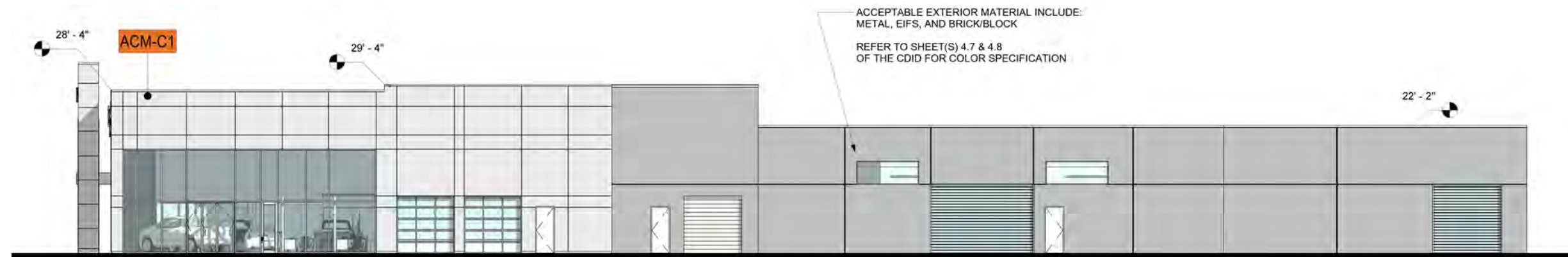
CORNELIUS, NC

3.90 PROPOSED - ELEVATIONS

GRAPHIC SCALE: 3/64" = 1'-0"



EAST



NORTH

## EXTERIOR FINISH TAG LEGEND

<b>ACM-J1</b> Aluminum Composite Metal - Alpolic Anthracite Grey	<b>ACM-C1</b> Aluminum Composite Metal - Alpolic Silver Metallic	<b>EXP-C2</b> Exterior Paint - Benjamin Moore Rock Gray 1615, Flat	<b>GL-1</b> Glass: 1" Insulated, Butt-Jointed Vitro Solarban Low E on Acuity
<b>ACM-J2</b> Aluminum Composite Metal - Alpolic Harvest Trail Bamboo	<b>EXP-J1</b> Exterior Paint - Sherwin Williams 7067 Cityscape, Satin	<b>ACM-1</b> Aluminum Composite Metal - Alpolic High Polished Aluminum	<b>GL-C2</b> Insulating Glass System - PPG Black Spandrel Glass
<b>ACM-J3</b> Aluminum Composite Metal - Alpolic High Polished w/ Integral LED Light Strip by FCA approved Vendor	<b>EXP-J2</b> Exterior Paint - Sherwin Williams 6991 Black Magic, Satin	<b>CW-1</b> Curtain Wall Framing - Kawneer Clear Anodized Butt Jointed	<b>EIFS-1</b> EIFS - STO CORP Medium Sand Oyster #21612
<b>ACM-4</b> Aluminum Composite Metal - Alpolic Color to Match Adjacent	<b>EXP-C1</b> Exterior Paint - Benjamin Moore Pelican Gray 1612, Flat	<b>SF-1</b> Storefront Framing - Kawneer TRIFAB 451 System Butt Jointed	<b>EIFS-2</b> EIFS - STO CORP to Match ACM-J1 Anthracite

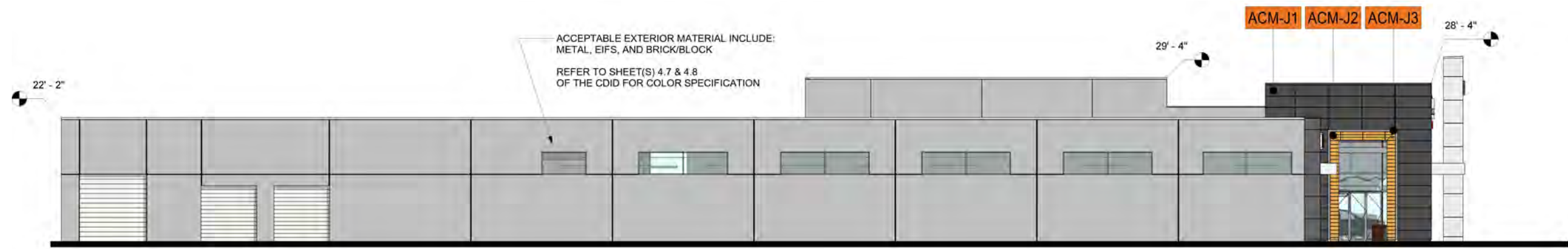
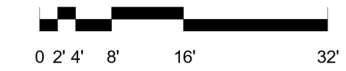
Pre-Engineered construction is acceptable for service & parts departments

# LAKE NORMAN CDR+J STANDARD

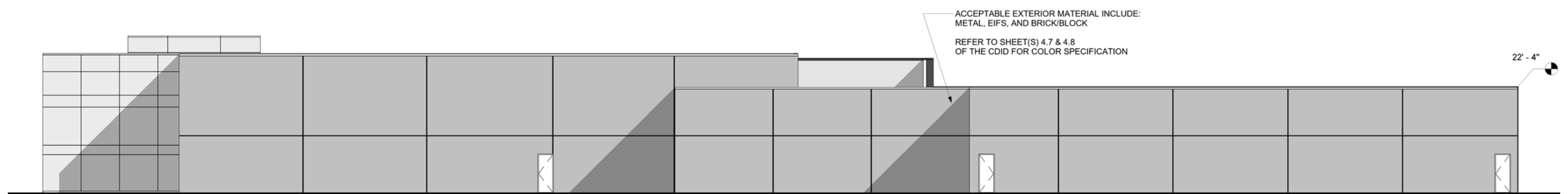
CORNELIUS, NC

## 3.91 PROPOSED - ELEVATIONS

GRAPHIC SCALE: 3/64" = 1'-0"



SOUTH



WEST

### EXTERIOR FINISH TAG LEGEND

<b>ACM-J1</b> Aluminum Composite Metal - Alpolic Anthracite Grey	<b>ACM-C1</b> Aluminum Composite Metal - Alpolic Silver Metallic	<b>EXP-C2</b> Exterior Paint - Benjamin Moore Rock Gray 1615, Flat	<b>GL-1</b> Glass: 1" Insulated, Butt-Jointed Vitro Solarban Low E on Acuity
<b>ACM-J2</b> Aluminum Composite Metal - Alpolic Harvest Trail Bamboo	<b>EXP-J1</b> Exterior Paint - Sherwin Williams 7067 Cityscape, Satin	<b>ACM-1</b> Aluminum Composite Metal - Alpolic High Polished Aluminum	<b>GL-C2</b> Insulating Glass System - PPG Black Spandrel Glass
<b>ACM-J3</b> Aluminum Composite Metal - Alpolic High Polished w/ Integral LED Light Strip by FCA approved Vendor	<b>EXP-J2</b> Exterior Paint - Sherwin Williams 6991 Black Magic, Satin	<b>CW-1</b> Curtain Wall Framing - Kawneer Clear Anodized Butt Jointed	<b>EIFS-1</b> EIFS - STO CORP Medium Sand Oyster #21612
<b>ACM-4</b> Aluminum Composite Metal - Alpolic Color to Match Adjacent	<b>EXP-C1</b> Exterior Paint - Benjamin Moore Pelican Gray 1612, Flat	<b>SF-1</b> Storefront Framing - Kawneer TRIFAB 451 System Butt Jointed	<b>EIFS-2</b> EIFS - STO CORP to Match ACM-J1 Anthracite

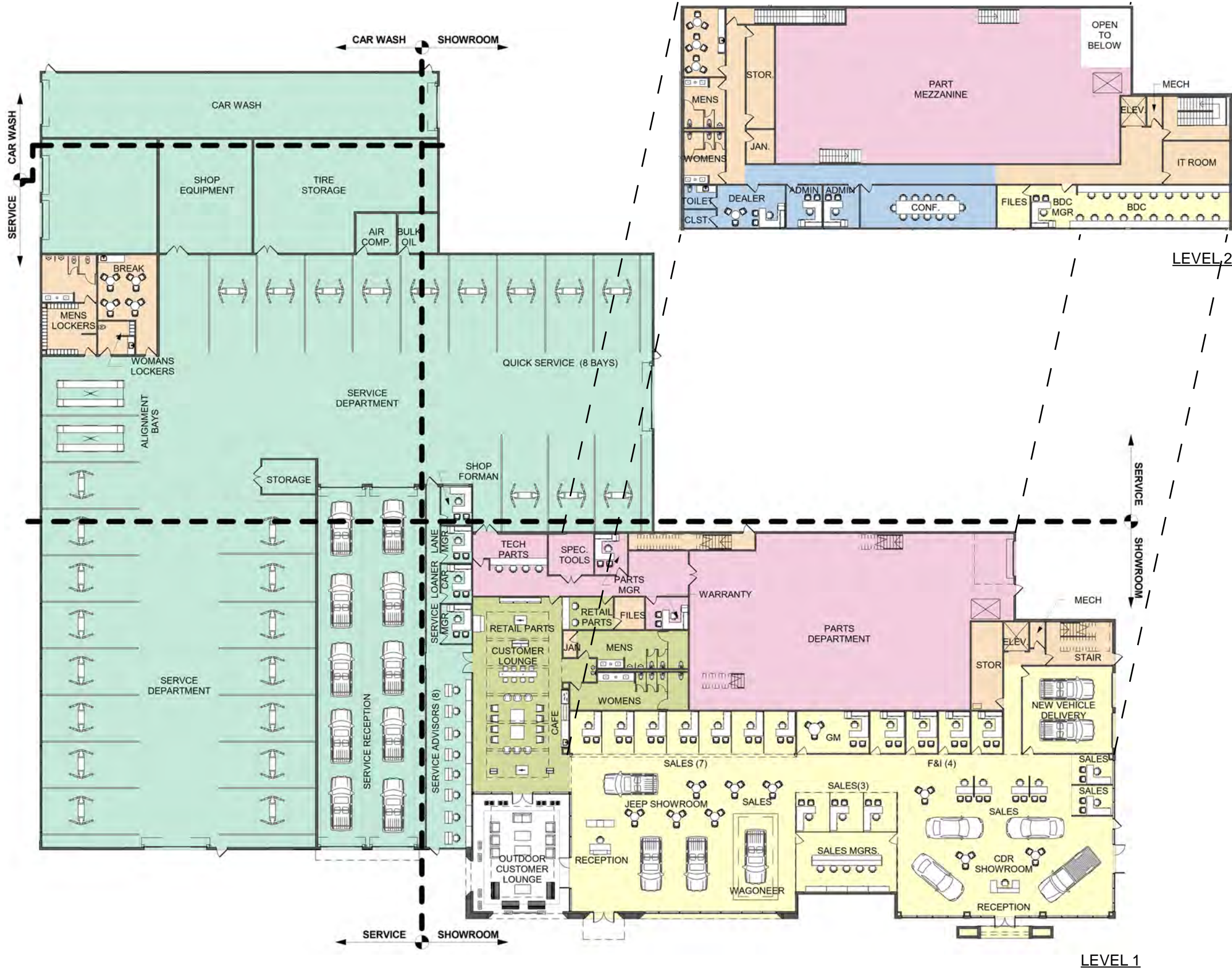
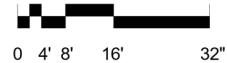
Pre-Engineered construction is acceptable for service & parts departments

# LAKE NORMAN CDR+J STANDARD

CORNELIUS, NC

## 3.20 PROPOSED - AREA PLANS - COMPOSITE

GRAPHIC SCALE: 1/32" = 1'-0"



CDR+J REQUIRED AREAS			PP = 1,882
PROGRAM TYPE	REQUIRED	PROPOSED	VARIANCE
<b>SHOWROOM &amp; SALES TOTAL</b>	<b>8,089 SF</b>	<b>10,730 SF</b>	<b>+ 3,688 SF</b>
JEEP SALES	1,544 SF	3,389 SF	+ 1,845 SF
SHOWROOM	2,000 SF	2,000 SF	0 SF
DISPLAY VEHICLES	4	4	0
CDR SALES	1,544 SF	3,388 SF	+ 1,844 SF
SHOWROOM	2,000 SF	2,000 SF	0 SF
DISPLAY VEHICLES	4	4	0
NEW VEHICLE DELIVERY	1,000 SF	1,000 SF	0 SF
DELIVERY BAYS	2	2	0
<b>CUSTOMER CORE TOTAL</b>	<b>2,217 SF</b>	<b>2,552 SF</b>	<b>+ 335 SF</b>
<b>SERVICE TOTAL</b>	<b>24,333 SF</b>	<b>31,052 SF</b>	<b>+ 6,719 SF</b>
DEPARTMENT	24,333 SF	32,267 SF	+ 7,934 SF
SERVICE STALLS	36	32	-4
WASH & DETAIL STALLS	3	3.5	+ 0.5
<b>PARTS TOTAL</b>	<b>10,472 SF</b>	<b>* 9,946 SF</b>	<b>* - 526 SF</b>
DEPARTMENT	6,283 SF	5,732 SF	- 551 SF
MEZZANINE	4,189 SF	4,214 SF	+ 25 SF
<b>ADMINISTRATIVE TOTAL</b>	<b>1,104 SF</b>	<b>1,602 SF</b>	<b>- 498 SF</b>
<b>SUPPORT &amp; EMPLOYEE TOTAL</b>	<b>1,711 SF</b>	<b>4,164 SF</b>	<b>+ 2,453 SF</b>
<b>GRAND TOTAL</b>	<b>47,926 SF</b>	<b>62,452 SF</b>	<b>+ 14,526 SF</b>

\*Additional area at remote site/facility. Refer to DAP-11 or project note.



TRUE

# Goree

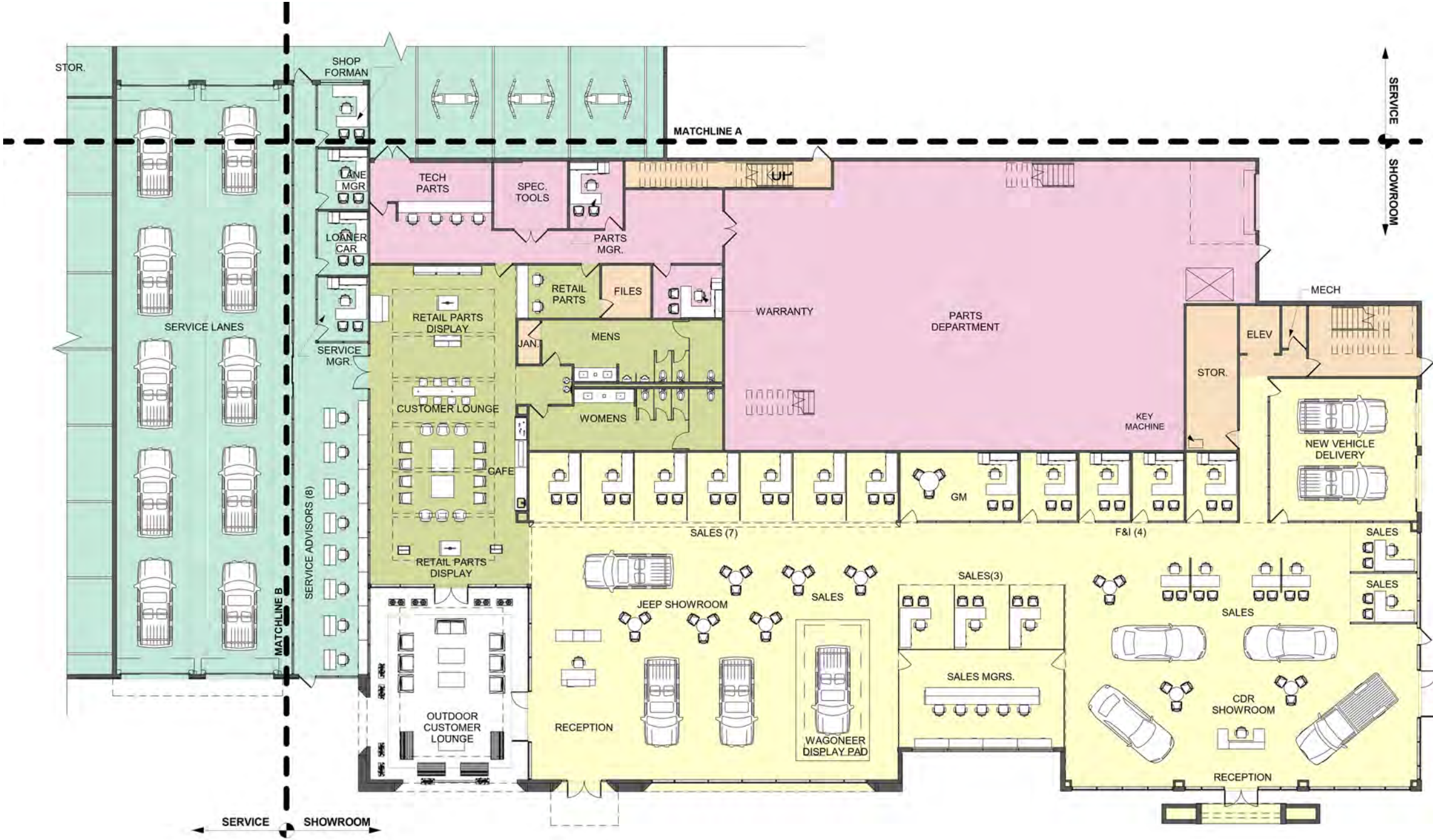
Interiors | Architecture | Brand

# LAKE NORMAN CDR+J STANDARD

CORNELIUS, NC

## 3.21 PROPOSED - AREA PLAN - SHOWROOM

GRAPHIC SCALE: 3/64" = 1'-0"



TRUE

# Goree

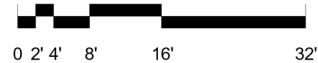
Interiors | Architecture | Brand

# LAKE NORMAN CDR+J STANDARD

CORNELIUS, NC

## 3.22 PROPOSED - AREA PLAN - SERVICE

GRAPHIC SCALE: 3/64" = 1'-0"



TRUE

# Goree

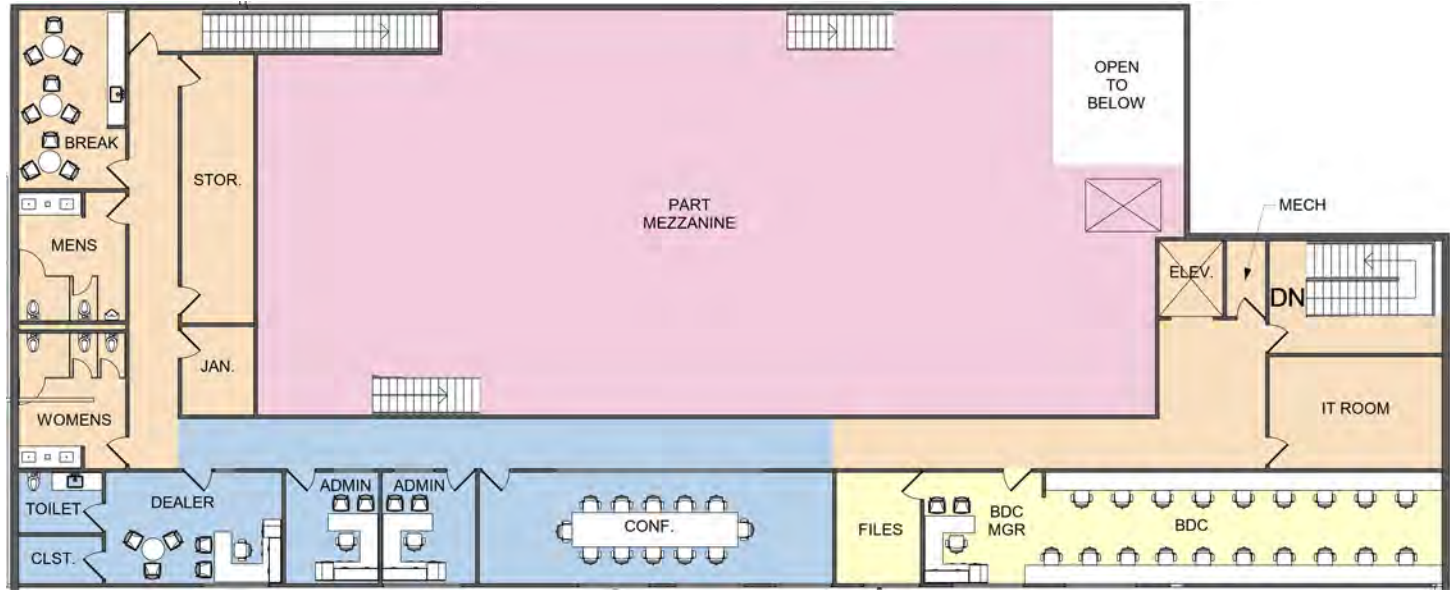
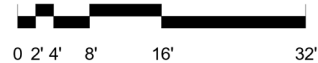
Interiors | Architecture | Brand

# LAKE NORMAN CDR+J STANDARD

CORNELIUS, NC

## 3.23 PROPOSED - AREA PLAN - LEVEL 2

GRAPHIC SCALE: 3/64" = 1'-0"



TRUE

# Goree

Interiors | Architecture | Brand